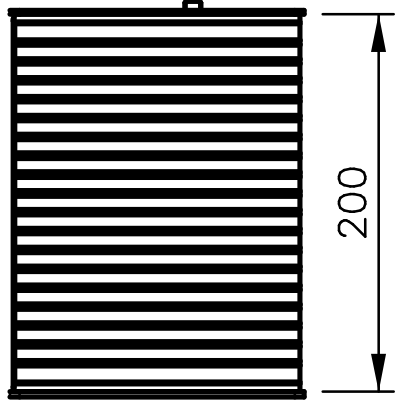
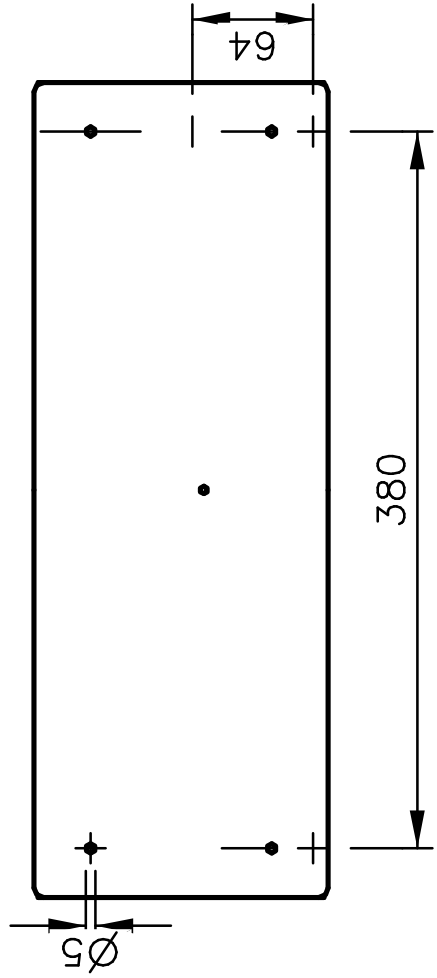


Design Notes;

- 1) The heatsinks in this chassis each have a nominal thermal resistance of 0.48 C/W for a 30C rise.
- 2) Unpacked weight of this chassis; 5.2 kg
- 3) Front panel 3mm thick Al./ Rear 2mm Al. / Top & Bottom 0.8mm Steel



Note:
 This design is protected by Copyright .
 ezChassis is a registered TradeMark
 Info. correct at date of issue(13/4/08)
 but may be updated and improved.
 www.designbuildlisten.com

